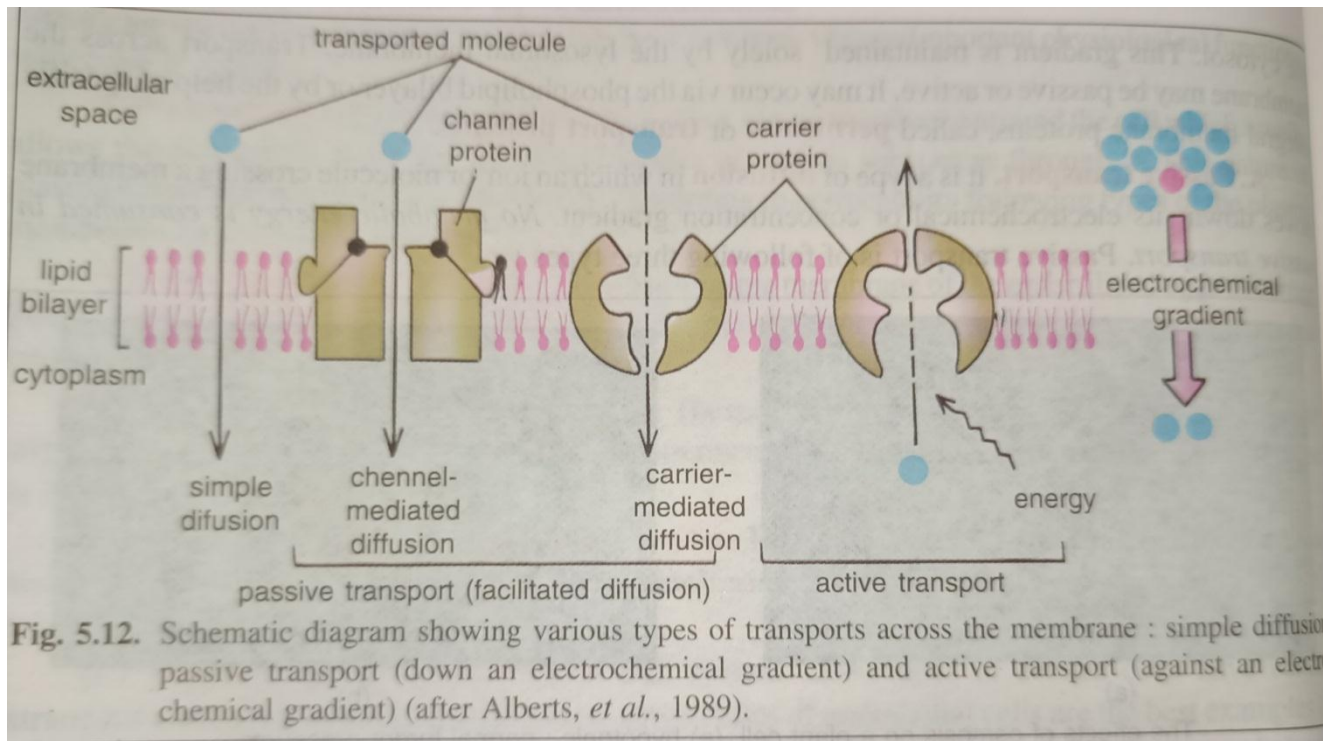


**Lecture Series on
Biochemistry
(Part 6)**

Membrane transport



Membrane transport

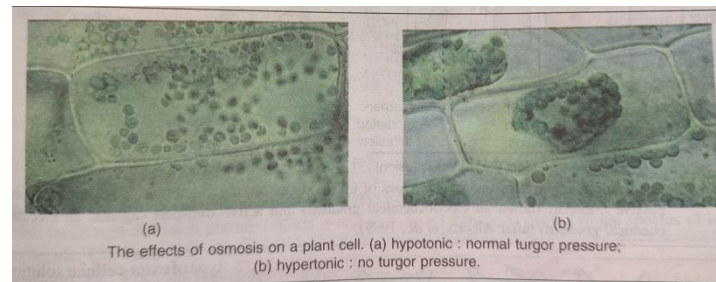
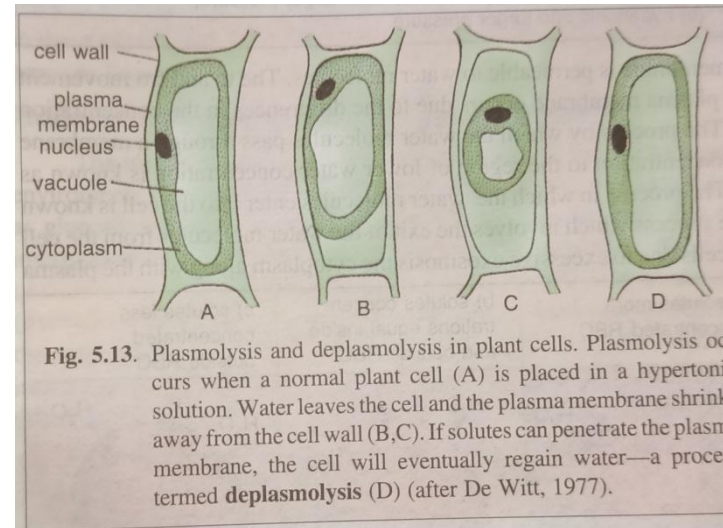
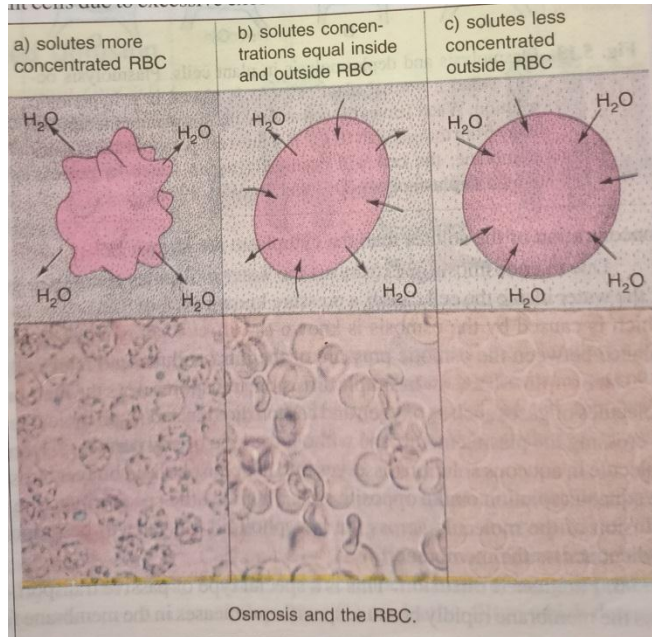
- Plasma membrane is highly selective.
- This ensures that only essential molecules such as glucose, amino acids and lipids can readily enter the cell and that these molecules and metabolic intermediates remain within the cell and the waste compounds leave the cell.

Mode of transport across Plasma Membrane

- Passive transport
- Active transport

Passive transport

- Osmosis
- Simple diffusion
- Facilitated diffusion



Active transport

- Sodium potassium ATPase
- Proton pump

