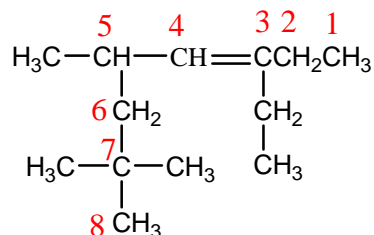


Base name- Hexane

Branches- 3-ethyl-4-methyl

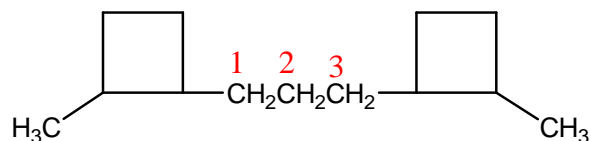
Full name- 3-ethyl-4-methylhexane



Base name- 3-octene, oct-3-ene

Branches- 3-ethyl-5,7,7-trimethyl

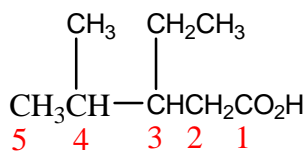
Full name- 3-ethyl-5,7,7-trimethyl-3-octene



Base name- propane

Branches- 1,3-bis-(2-methylcyclobutyl)

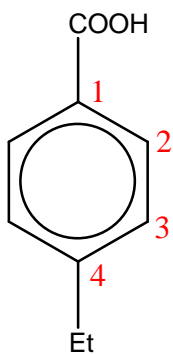
Full name- 1,3-bis-(2-methylcyclobutyl)propane



Base name- pentane

Branches- 3-ethyl-4-methyl

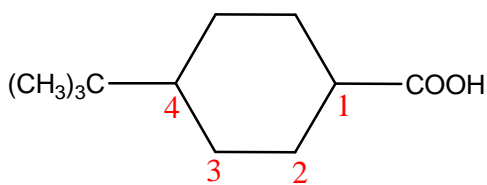
Full name- 3-ethyl-4-methyl pentanoic acid



Base name- Benzoic acid

Branches- 4-ethyl

Full name- 4-ethylbenzoic acid



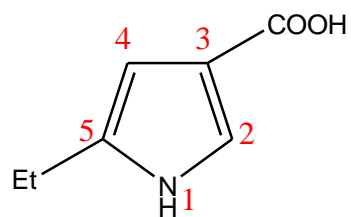
Root- Cyclohexane

Suffix- Carboxylic acid

Base name- Cyclohexane carboxylic acid

Branches- 4-tertbutyl

Full name- 4-tertbutylcyclohexane carboxylic acid



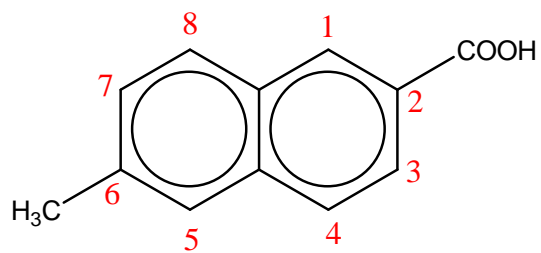
Root- Pyrrole

Suffix- Carboxylic acid

Base name- 3-pyrrolecarboxylic acid

Branches- 5-ethyl

Full name- 5-ethyl-3-pyrrolecarboxylic acid



Root- Naphth

Suffix- oic acid

Base name- 2-Naphthoic acid

Branches- 6-methyl

Full name- 6-methyl-2- Naphthoic acid